

The case study of Gediz in the context of the WatManSup project took place from November 2006 to April 2007. The main results showed that the physical component is essential for water managers to better understand the system, while the allocation component has proven to be very strong for scenario analysis. The overall conclusion is that both tools combined with multi-criteria analysis can support water managers in Gediz in their complex decision making process.

More information on the WatManSup project and the reports on the Gediz case can be found on the project website: www.futurewater.nl/watmansup.



The project is financially supported by the Dutch Government through its program **Partners for Water**.

Contact

Anne van Loon
FutureWater
Costerweg 1G
6702 AA Wageningen
The Netherlands
Tel: +31 (0)317 425100
Email: a.vanloon@futurewater.nl
www.futurewater.nl/watmansup



WatManSup

Integrated Water Management Support Methodologies

a case study in Gediz basin, Turkey



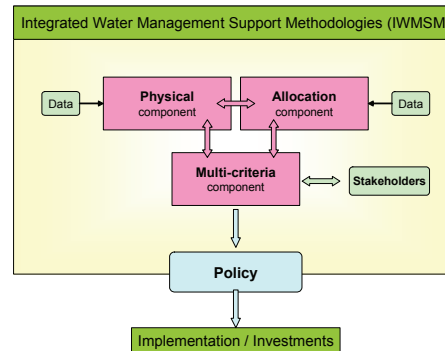
Supporting
strategic
water
management
decision making

FutureWater, Netherlands
Institute for Environmental Studies, Netherlands
Waterboard Hunze en Aa's, Netherlands
Soil&Water Resources Research Institute, Menemen, Turkey
SUMER, Izmir, Turkey
EA-TEK, Izmir, Turkey
SASOL Foundation, Kitui, Kenya
University of Nairobi, Kenya

Integrated Water Management Support Methodologies

Improved water management is highly required as water related disasters are on the rise. To support water management in complex decision making effective tools are essential. Each water related problem requires a different approach, different tools. To choose the appropriate tools for a specific situation is not straightforward.

The **WatManSup** project aims to help water managers to make that decision, to choose for the most suitable water management tool or combination of tools. In fact, WatManSup will support water managers in making decisions regarding strategic water management including investment decisions.



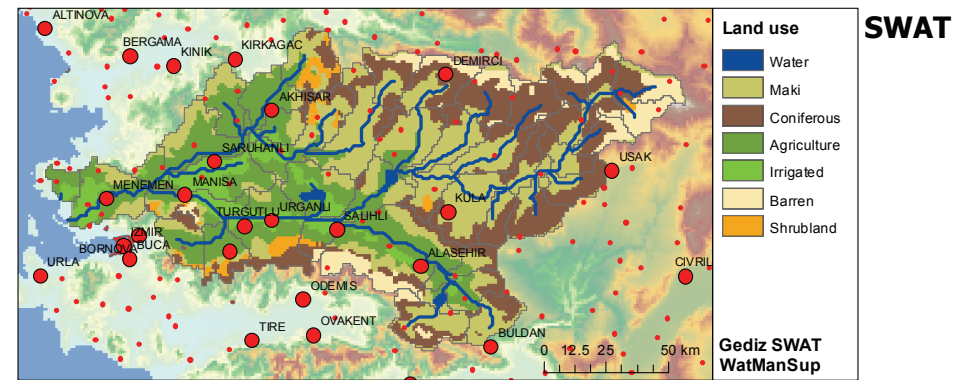
Integrated Water Management Support Methodologies (IWMSM) consist out of three components (see Figure):

- **Physical component (SWAT):**
This part relies on accurate description of the physical processes related to water.
- **Allocation component (WEAP):**
This component is mainly used to evaluate the impact of human interference in water distribution and allocation issues for water shortage as well as water excess.
- **Multi-criteria component (MCA):**
This component is used widely for all kind of applications, but only to a very limited extent for water management issues so far.



Turkey case study

The main conclusions of the case study undertaken in the Gediz basin in Turkey are:



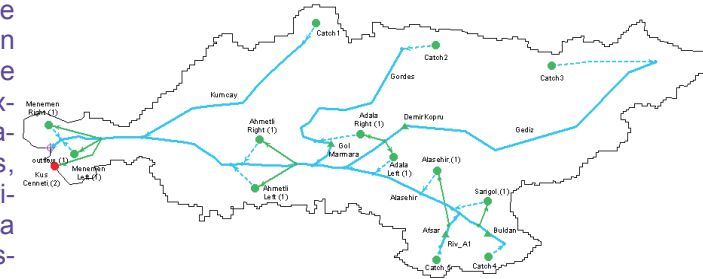
• SWAT:

The SWAT model has proven to be a strong tool able to support water managers and policy makers in Gediz, as physical processes and human interventions can be analysed in great detail. All components of the water balance of the reservoirs and the irrigation schemes in Gediz were analysed, which can be used to evaluate scenarios, such as climate change.

• WEAP:

The study clearly demonstrated that a framework as WEAP is powerful in evaluating current and future options in water resources. The strong aspect of WEAP is that the framework is already in place so that evaluation of alternative water allocations can be performed on the fly. Examples in Gediz include the impact of an extension of irrigation schemes, reduction of irrigation losses or a decrease in reservoir storage.

WEAP



• MCA:

Multi-criteria analysis can deal with water management problems with multiple objectives and multiple stakeholders. Its strength is the combination of factual information with policy priorities. It combines results of SWAT and WEAP with the input of various stakeholders in the Gediz basin.