

The project is financially supported by the Dutch Government through its program Partners for Water.

Implementing Partners:

- FutureWater, Netherlands
- Institute for Environmental Studies, Netherlands
- Waterboard Hunze en Aa's, Netherlands
- SASOL Foundation, Kitui, Kenya
- University of Nairobi, Kenya
- Soil & Water Resources Research Institute, Menemen, Turkey
- SUMER, Izmir, Turkey
- EA-TEK, Izmir, Turkey



Contact

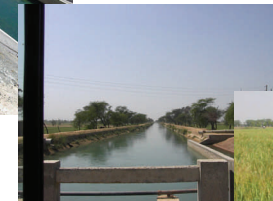
Anne van Loon
FutureWater
Generaal Foulkesweg 28
6703 BS Wageningen
The Netherlands
Tel: +31 (0)317 425100
Email: a.vanloon@futurewater.nl
www.futurewater.nl/watmansup



WatManSup

Integrated Water Management Support Methodologies

a case study in Turkey and Kenya



**Supporting
strategic
water
management
decision making**

FutureWater, Netherlands
Institute for Environmental Studies, Netherlands
Waterboard Hunze en Aa's, Netherlands
Soil&Water Resources Research Institute, Menemen, Turkey
SUMER, Izmir, Turkey
EA-TEK, Izmir, Turkey
SASOL Foundation, Kitui, Kenya
University of Nairobi, Kenya

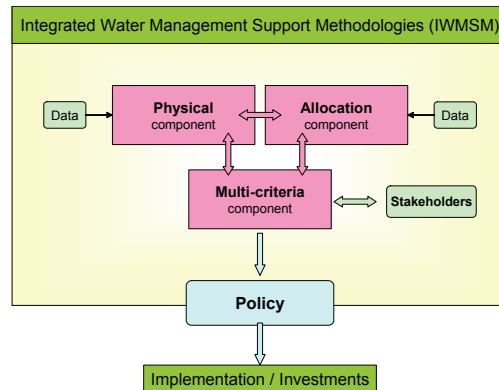
WatManSup, Integrated Water Management Support Methodologies

The challenge to manage our water resources in a sustainable and appropriate manner is growing. Water related disasters are not accepted anymore and societies expect more and more that water is always available at the right moment and at the desired quantity and quality.

Current water management practices are still focused on reacting to events occurred in the past: the **re-active** approach. At many international high level ministerial and scientific meetings a call for more strategic oriented water management, the **pro-active** approach, has been advocated. Despite these calls such a pro-active approach is hardly adopted by water managers and policy makers

Water managers and decisions makers are aware about the necessity of this **paradigm shift**: from a re-active towards a pro-active approach, but are confronted with the lack of appropriate methodologies.

To be prepared for the paradigm shift **Integrated Water Management Support Methodologies (IWMSM)** are needed that go beyond the traditional operational support tools. Note that these IWMSM are more than only tools, but include conceptual issues, theories, combining technical and socio-economic aspects.



Two Partner for Water countries, Turkey and Kenya, have approached the Dutch consortium to assist them in this paradigm-shift to pro-active water management.



The first country is **Turkey** where water scarcity is one of the major challenges to economic development. For one river basin, the Gediz Basin, this

water scarcity has increased over the last decades and the country is looking for IWMSM that can help to develop their water action plans.



The second country to focus on is **Kenya**, where both very dry and very wet areas can be found. Especially the area around Kitui-town will be used for the project to identify how IWMSM can be implemented.



The WatManSup project has started in June 2006 and will be completed in June 2007.

More information can be found on the project website: www.futurewater.nl/watmansup.